

# QAE PTSA General Membership Meeting

10 June 2015

**QUEEN ANNE ELEMENTARY**  
established 2010



# Year Five in Review

## Fundraisers

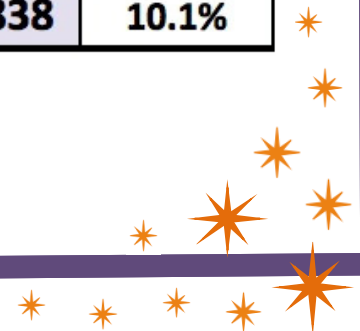
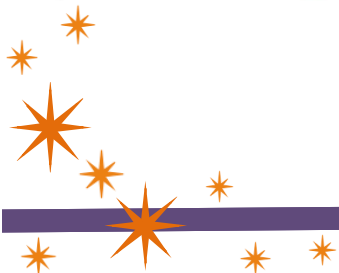
- Jog-a-thon
- Fund Drive
- Auction

## Community Events

- Back to School Night
- Family Game Night
- Spaghetti Night
- Teacher Appreciation Week
- 5th Grade Graduation
- Islandwood
- Back to School Picnic
- Oktoberfest/Parent Social
- Open House Tours
- Field Day
- Summer Play Dates
- Parent Reception
- Field Trips

# Fundraising 2014-15

	Projected			Actual			
FALL	Gross	Expense	Net	Gross	Expense	Net	Net Diff
Fund Drive	\$80,500	(\$500)	\$80,000	\$69,735	(\$233)	\$69,502	-15.10%
Jog-a-Thon	\$28,750	(\$4,000)	\$24,750	\$46,527	(\$3,713)	\$42,814	42.19%
Fall Total	\$109,250	(\$4,500)	\$104,750	\$116,262	(\$3,946)	\$112,316	6.74%
SPRING	Gross	Expense	Net	Gross	Expense	Net	Net Diff
Auction	\$207,000	(\$55,000)	\$157,000	\$224,420	(\$51,181)	\$173,239	
Spring Total	\$207,000	(\$55,000)	\$157,000	\$224,420	(\$51,181)	\$173,239	9.37%
Matching	\$41,000	\$0	\$41,000	\$50,021	\$0	\$50,021	18.0%
Merch Fees	\$0	(\$7,000)	(\$7,000)	\$0	(\$6,738)	(\$6,738)	-3.9%
Total	\$41,000	(\$7,000)	\$34,000	\$50,021	(\$6,738)	\$43,283	21.4%
TOTAL	\$357,250	(\$66,500)	\$295,750	\$390,703	(\$61,865)	\$328,838	10.1%



# 2015-16

## Review of Budget

**QUEEN ANNE ELEMENTARY**  
established 2010



# Fundraising 2015-16 (Projected)

	<u>INCOME</u>	<u>EXPENSE</u>	<u>NET</u>
Fundraising Activities:			
Fund Drive	\$85,000.00	(\$500.00)	\$84,500.00
Jog-a-Thon	\$50,000.00	(\$3,600.00)	\$46,400.00
Auction	\$225,000.00	(\$70,000.00)	\$155,000.00
Matching	\$45,000.00	\$0.00	\$45,000.00
Merchant Fees		(\$10,000.00)	(\$10,000.00)
Total	\$405,000.00	(\$84,100.00)	\$320,900.00

## Misc Income:

Interest Income	\$900.00	\$0.00	\$900.00
Passive Income	\$1,500.00	\$0.00	\$1,500.00
Spiritwear	\$10,850.00	(\$7,750.00)	\$3,100.00
Oktoberfest	\$1,500.00	(\$3,000.00)	(\$1,500.00)
	\$419,750.00	(\$94,850.00)	\$324,900.00



# Expenses 2015-16 (Projected)

<b>Expense Category</b>	<b>2016</b>	<b>% of Budget</b>
Staffing - SPS Grant/Salaries:	\$161,463	49.7%
Staff & Classroom Support:	\$36,000	11.1%
Staffing Support - Training & Sub Days	\$30,025	9.2%
Climate:	\$6,050	1.9%
Curriculum:	\$2,200	0.7%
Safety:	\$1,000	0.3%
Activities:	\$27,139	8.4%
Launchpad	\$17,939	5.5%
Software & Tech Needs:	\$16,784	5.2%
SEL:	\$9,850	3.0%
Facilities:	\$4,400	1.4%
Admin:	\$3,500	1.1%
Enrichment:	\$3,250	1.0%
Community Outreach & Support:	\$2,800	0.9%
Events:	\$2,500	0.8%
PBL Support:	\$0	0.0%
Pending Projects	\$0	0.0%
<b>Grand Total</b>	<b>\$324,900</b>	<b>100.0%</b>

# Standing Rules Updates - Board

## Directors (Board Position)

- Communications Director
- *Facilities Director (OPEN)*
- Fundraising Director (Co-Director OPEN)
- Legislative Director (Co-Director OPEN)
- Social and Emotional Learning Director
- Technology Advisory Director



# Standing Rules Updates - Board

## Coordinators (Non-Board Position)

- Community Activities Coordinator
- Enrichment Coordinator - Before/After School (Co-Coordinator OPEN)
- *Garden Coordinator (OPEN)*
- *Membership Coordinator (OPEN)*
- Parent Volunteer Coordinator (Co-Coordinator OPEN)





# Standing Rules Updates

- Update References for “Committee Chair” to “Director”
- Compliance with Washington State PTA ByLaws
  - Modify Executive Board from Co-Presidents, Vice Presidents, Secretary, Treasurer to:
  - President, Vice-President 1, Vice President 2, Secretary, Co-Treasurer, Asst. Treasurer

Approve updated Standing Rules



# Acknowledgements

**QUEEN ANNE ELEMENTARY**  
established 2010



# 2014-15 QAE PTSA Board

## **Outgoing Executive Board Members**

Amy Janas, President

Mindy Katz, Secretary

Melissa Denke, Co-Treasurer

## **Executive Board Members Moving to New Roles**

Heath Dixon, Vice-President

Rick North, Assistant Treasurer



# 2014-15 QAE PTSA Board

## **Outgoing Board Members**

Enrichment, Isadora Jiminez

Fundraising, Natalie Carlson

Garden, Christa Brown

Garden, Heather Huntington

Technology, Joe Booth



# 2014-15 QAE PTSA Board

## **Board Members Moving to New Roles**

Communications, Cari Lui (Vice President 2)

Membership, Julie Smith (Technology)

Parent Volunteer Coordinator, Gillian Jorgensen  
(Enrichment)



# 2015-16 QAE PTSA Executive Board

Position	Name
President	Heath Dixon
Vice-President 1	Ankur Kothari
Vice-President 2	Cari Lui
Secretary	Kari Edmondson
Co-Treasurer	OPEN
Asst. Treasurer	Rick North

All candidates have been nominated for election by the QAE PTSA Board





# 2015-16 QAE PTSA Board of Directors

Position	Name
Communications Directors	Karen Gigliotti
Facilities Director	OPEN and OPEN
Fundraising Directors	Lauren Haley and OPEN
Legislative Director	Susan Lusty and OPEN
Social Emotional Learning Directors	Meg Ferris and Nicole Siciliano
Technology Co-Chairs	Julie Smith and OPEN



# 2015-16 QAE PTSA Coordinators

Position	Name
Community Activities Coordinators	Lindsey Carillo and Suzanne Beckerman
Enrichment/Coordinator	Gillian Jorgensen and OPEN
Garden Coordinators	OPEN
Membership Coordinator	OPEN
Parent Volunteer Coordinators	Melanthia Peterman and OPEN



# 2015-16 Staff Updates/Status

## **On the Move**

- Ciara Leckie (2nd grade)
- Lauren Martin (2nd grade)
- Amanda Amsel (Art)
- Rachel Marks (Kindergarten)
- Carla Kirch (Administrative Assistant/Real Boss)
- Nick Baldwin (Resource Room)



# 2015-16 Staff Updates/Status

- Joe Bailey-Fogarty will be teaching a 4th/5th classroom
- Shauna Diller will be teaching a 1st/2nd classroom
- Kristi Leland will be job sharing the 5th grade classroom
- Rian Turner will be a 0.6 (three days/week) Resource Room teacher

*All of the above is subject to change.*

# Child Care Update

- KidsCo will lose 10 childcare spaces
- Moves to Cafeteria in the AM + PM
- Maintains Portable P3 (Middle/West)
- Survey: 149 Families Participated
- Good information on Childcare Need in 2015-16
  - AM + PM
  - AM Only
  - PM Only
  - Use of KidsCo and/or Enrichment Programs
- Working with KidsCo

# Question & Answer

**QUEEN ANNE ELEMENTARY**  
established 2010





Thank you!

**QUEEN ANNE ELEMENTARY**  
established 2010

