

mahlum



Queen Anne Elementary

COMMUNITY MEETING 06 June 2016





Agenda

Welcome & Introductions

Project Overview

Site & Existing Building Analysis

Concept Overview

Comments/Questions & Answers (at microphone)

**Comments/Questions & Answers (one-on-one):
Listening Stations**

Project Overview

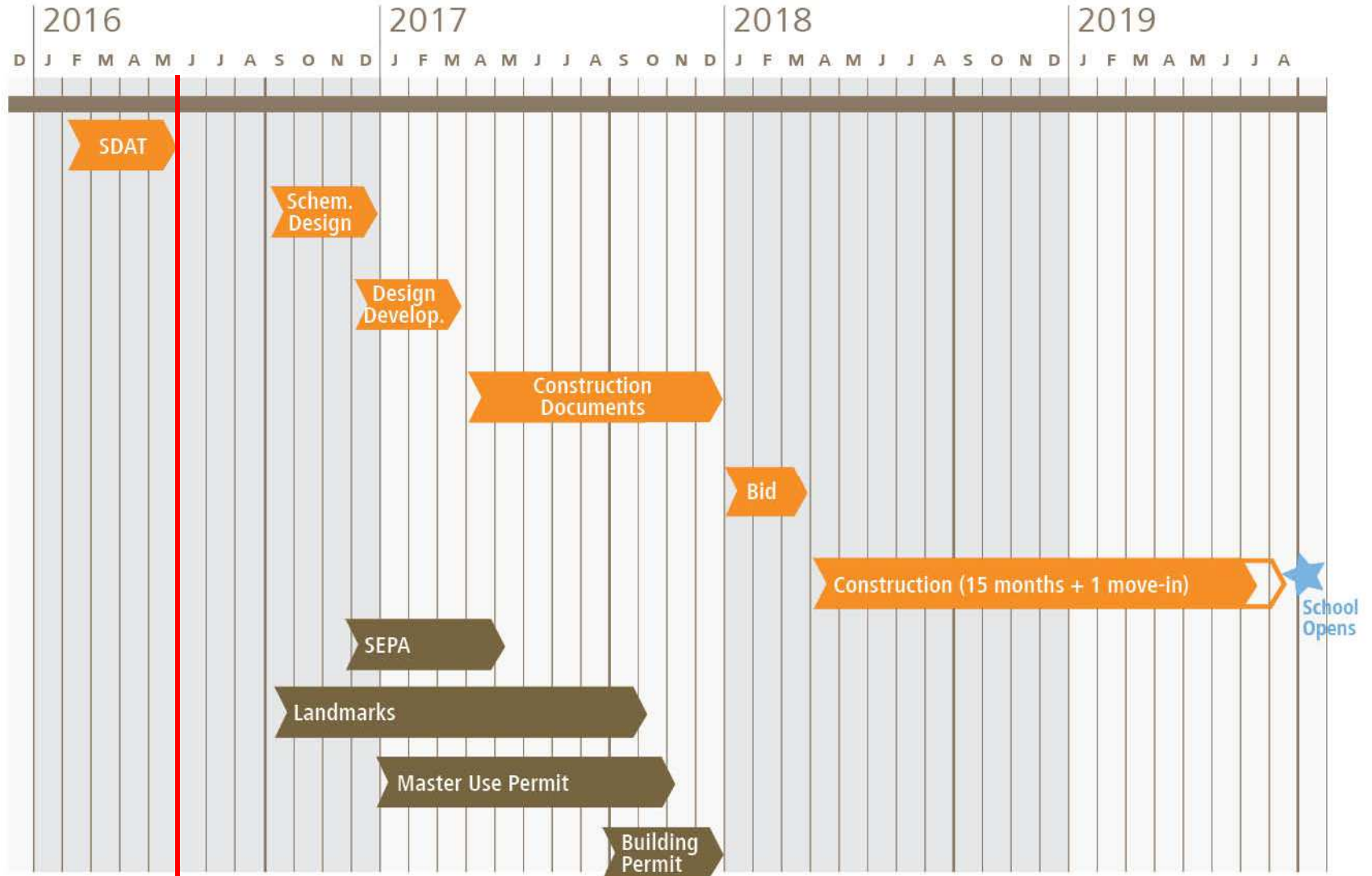


Project Overview

Build an addition with 200 seats (8 classrooms) of permanent capacity and a gymnasium to address current and projected elementary growth in Queen Anne and downtown Seattle, and reduce overcrowding at elementary schools in the area.

Total capacity of school is planned for 500 students.

Project Schedule



Phase One Project Budget

Total Project Costs \$ 16.4 M

Construction Costs \$ 10.8 M

New construction

Site improvements

Offsite improvements

Contingency and sales tax

Project “soft costs” \$ 5.6 M

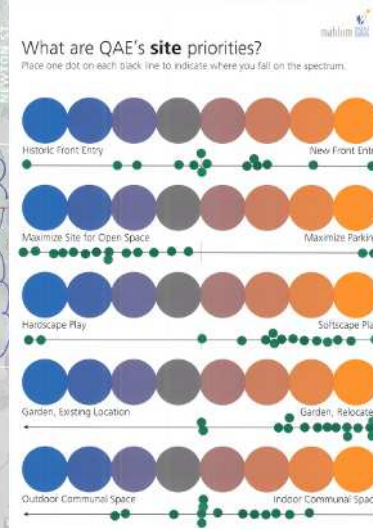
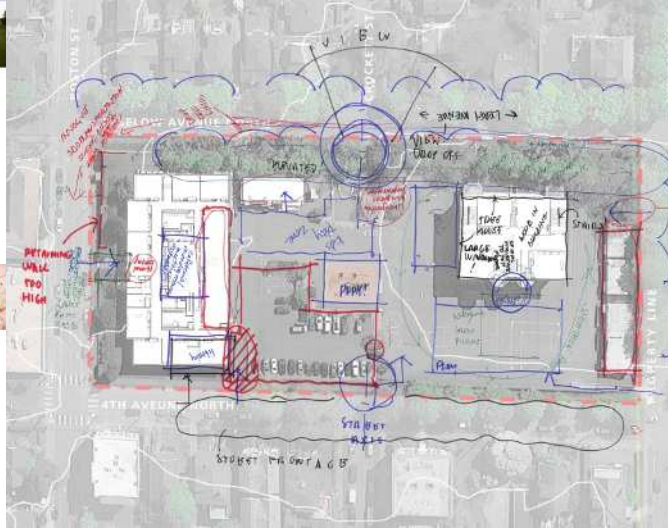
New furniture and equipment

Classroom technology

Network and phones

Professional services

Permit and utility fees



SDAT Process

SDAT 01 :: Learn - Places of Memory/History, Virtual Tours, Picture Exercise

Focus group meetings

SDAT 02 :: Uncover - Spectrums, Functional Programming, Foundational Questions

SDAT 03 :: Integrated Design Workshop - Sustainable Goals, Story Headline

Observation Day/Student Activities/PTSA

SDAT 04 :: Discover - Virtual Tours, Project Goals, Adjacencies

SDAT 05 :: Conceptualize

SDAT 06 :: Finalize



SDAT Outcome

Site Specific Educational Specification

Concept Design



Operating Framework

District vision, goals and policies

Generic Educational Specifications

Technical Building Standards

OSPI State Assistance Program (e.g. Washington Sustainable Schools Protocol)

Regulatory:

State environmental (SEPA)

Agencies Having Jurisdiction:
City of Seattle (DCI), Department of Neighborhoods (DON),
SDOT, Public Health, SPU, SCL, L&I, Utilities

Federal Policies (e.g. ADA)



BEX Attributes for High Achieving Schools

Learner-Centered Environment

Personalized Environment

Community Connections

Aesthetics

Safety

Program Adaptability

Collaboration

Site and Existing Building Analysis

Existing Buildings

Natural Features

Zoning

Traffic and Parking

Queen Anne Elementary



Queen Anne Elementary (John Hay School)



Landmark Designation



Designated Features

Site

Exterior of 1914
Wood Building

[Likely] exterior of
1921 Brick Building

Entry Staircase of
Wood Building



Queen Anne Elementary

Option School

Social and Emotional Learning Focus

Project Based Learning

One to World / Digital Learning



Queen Anne Elementary

Five Pillars

We are self-directed learners

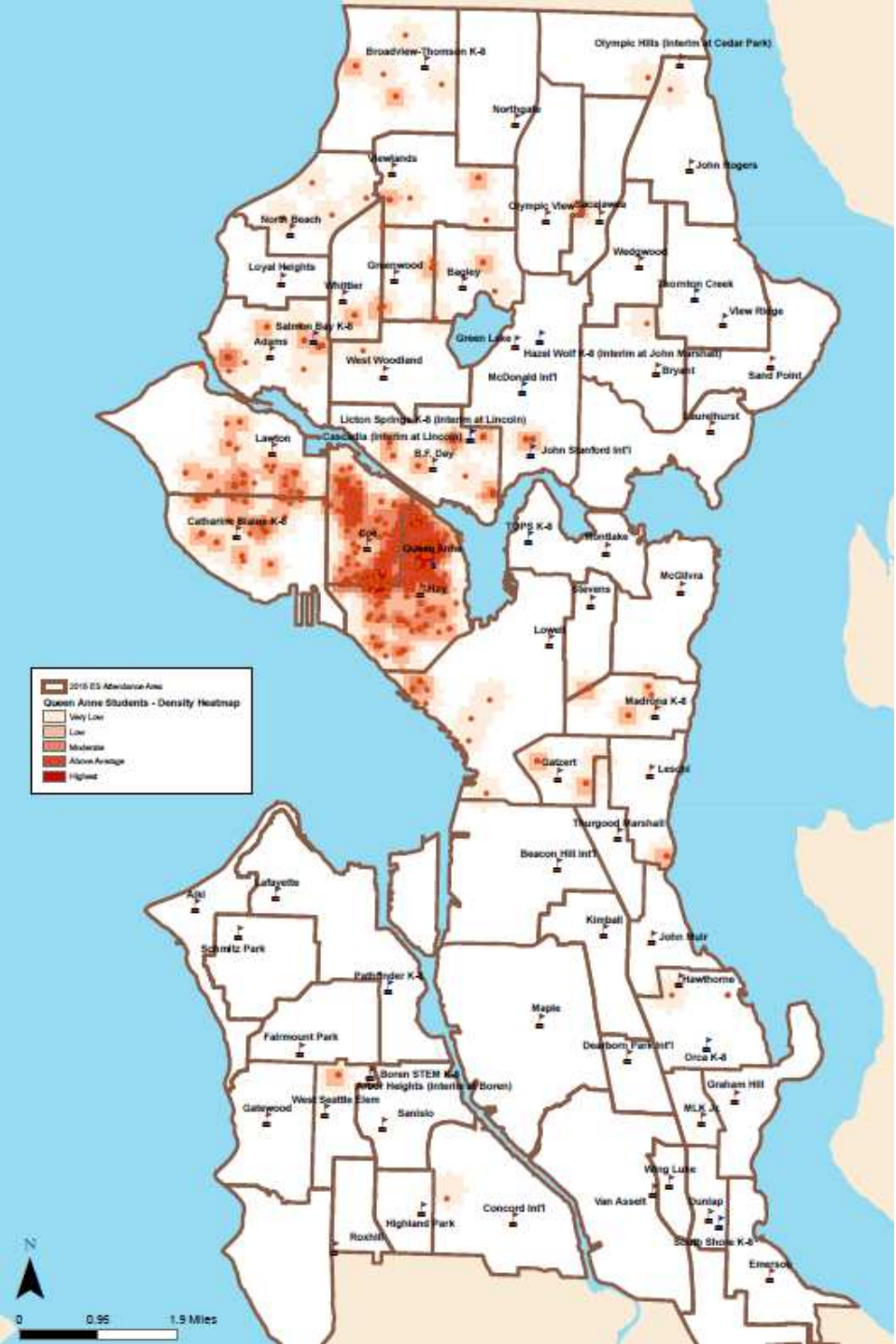
We encourage each other to think critically and learn

We are concerned, confident and compassionate citizens of the world

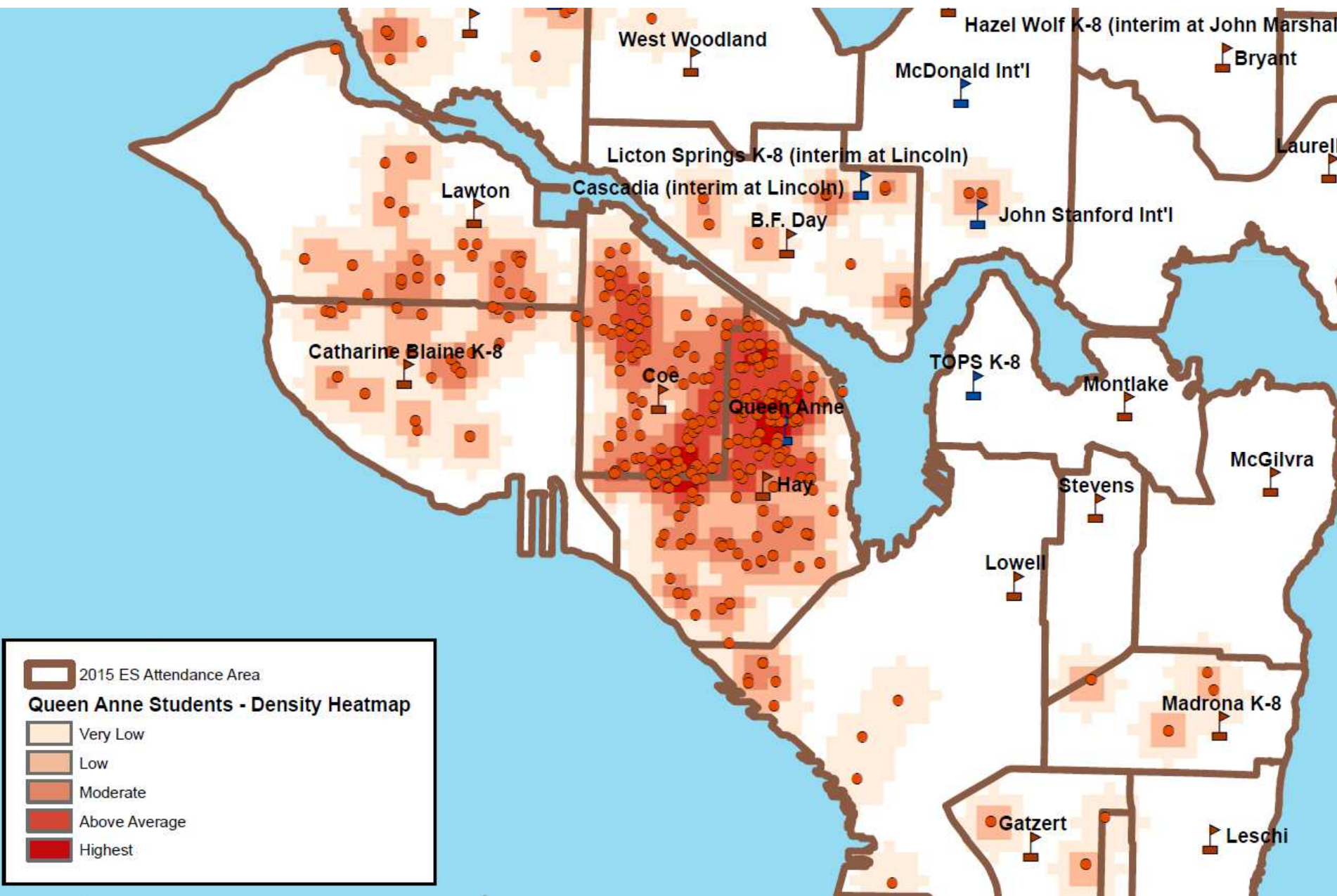
We learn everywhere, we learn together

We are creative

Queen Anne Elementary



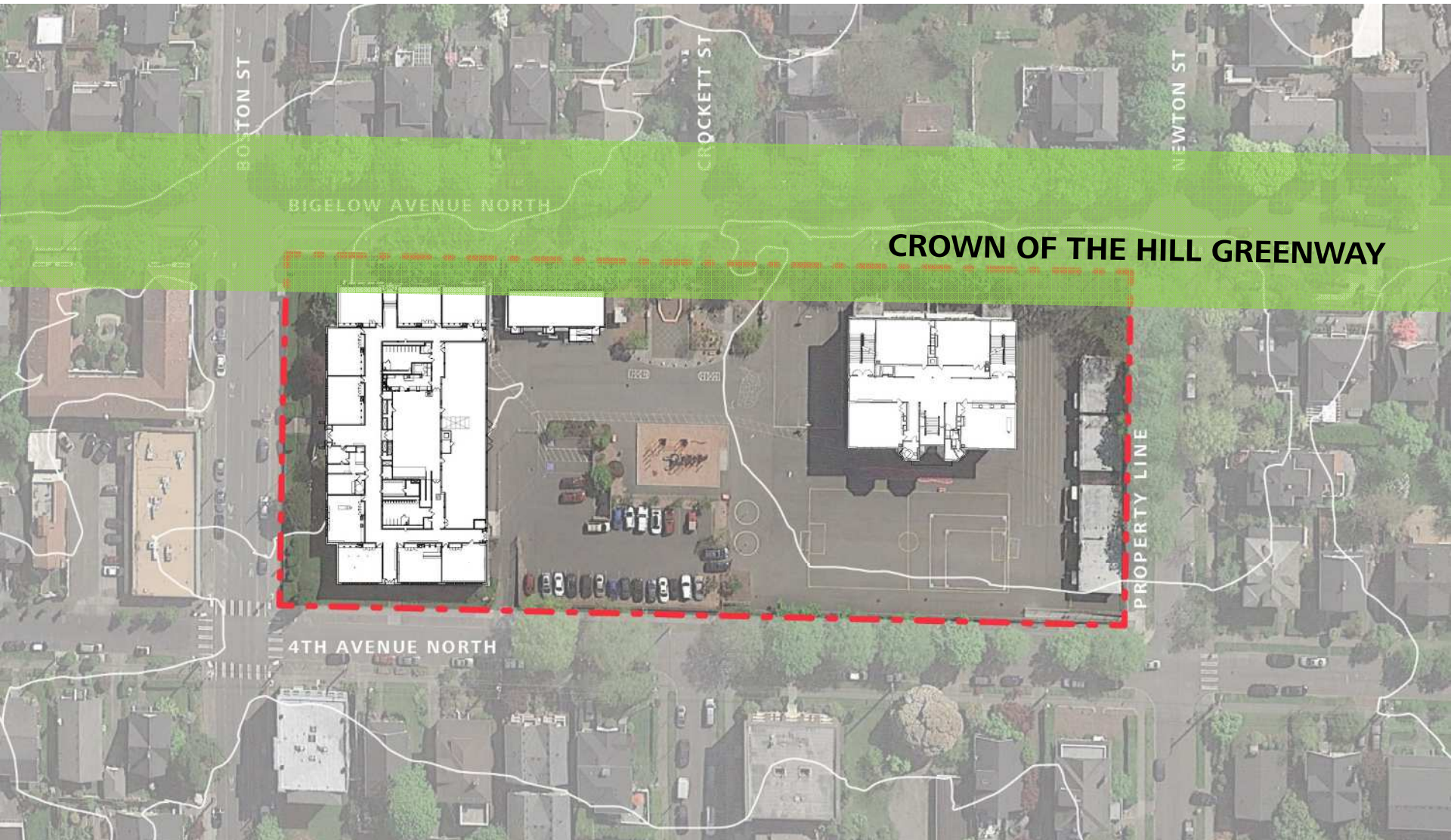
Queen Anne Elementary

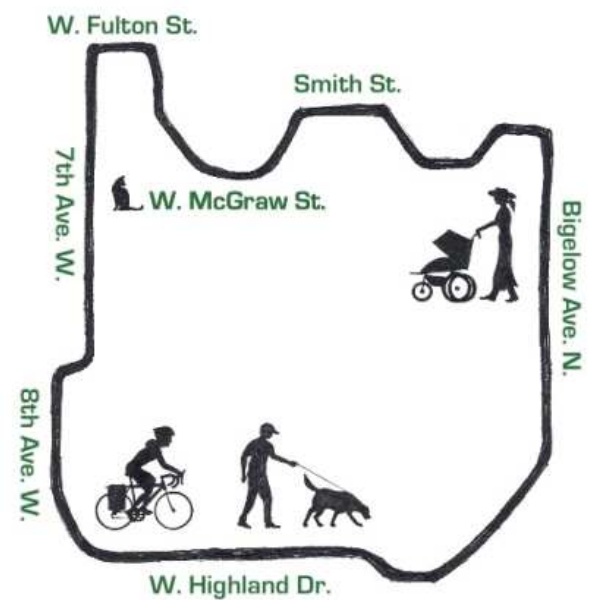


Parks and Schools



Site Features





Crown of the Hill Greenway

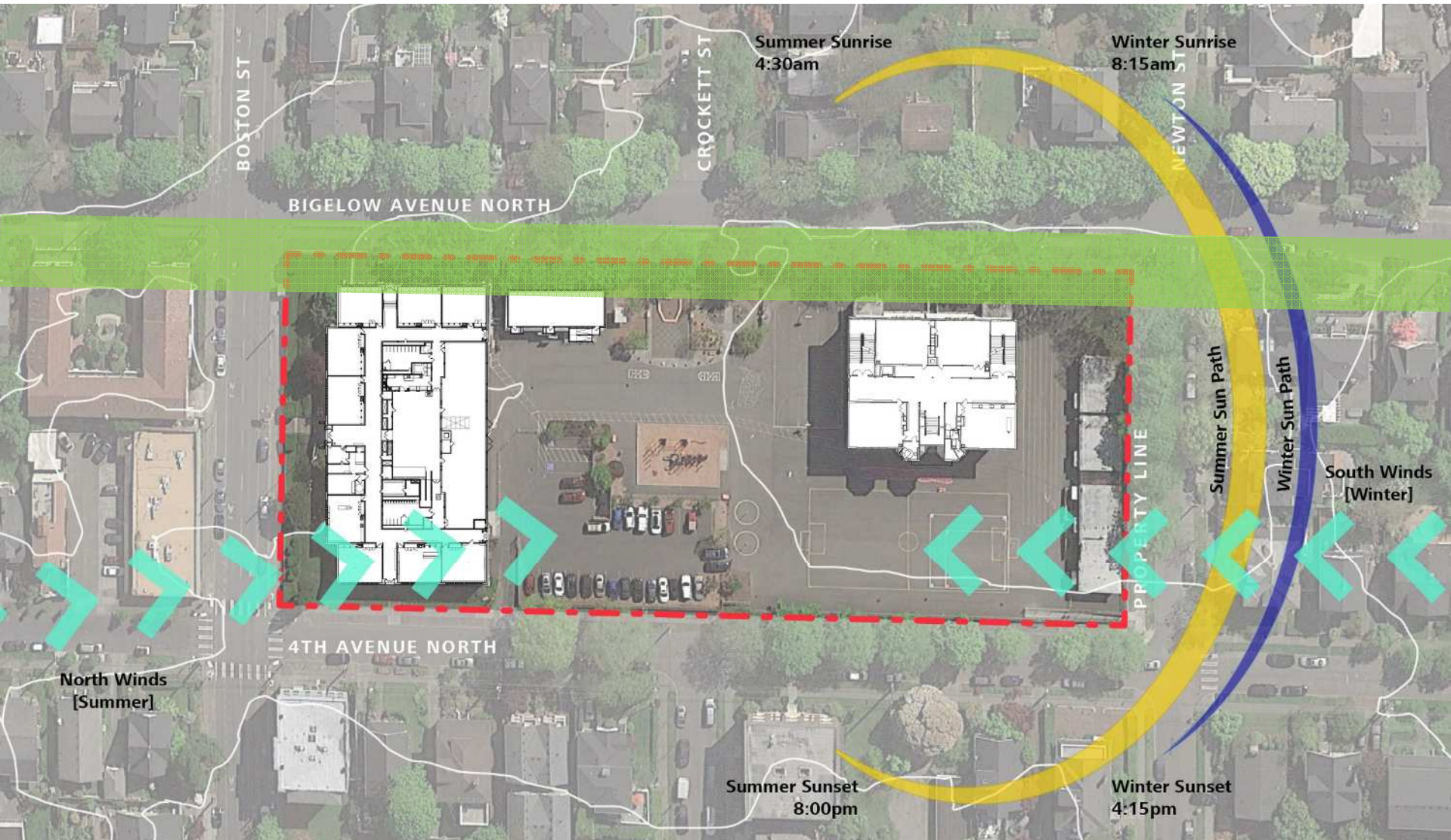
In 1906, the local community club approached the Parks Board to propose a scenic route ringing the hill. The transfer to the Park Department occurred in 1911; work finally began, and was completed in 1916:

Maples, sycamores, oaks, elms, cottonwoods, chestnuts and other trees were planted along the route. In 1942 the roads (but not the landscaping) were transferred from Parks to the City Engineer's office. Parks and Engineering continue each to have responsibilities relative to the boulevard. Nonetheless, the boulevard continues to be recognized as a vital part of the Queen Anne neighborhood, **"The Crown of Queen Anne", is an "urban trail that offers shade in the summer, beautiful autumn color in the fall, and an open and sunny landscaped path in the winter."**

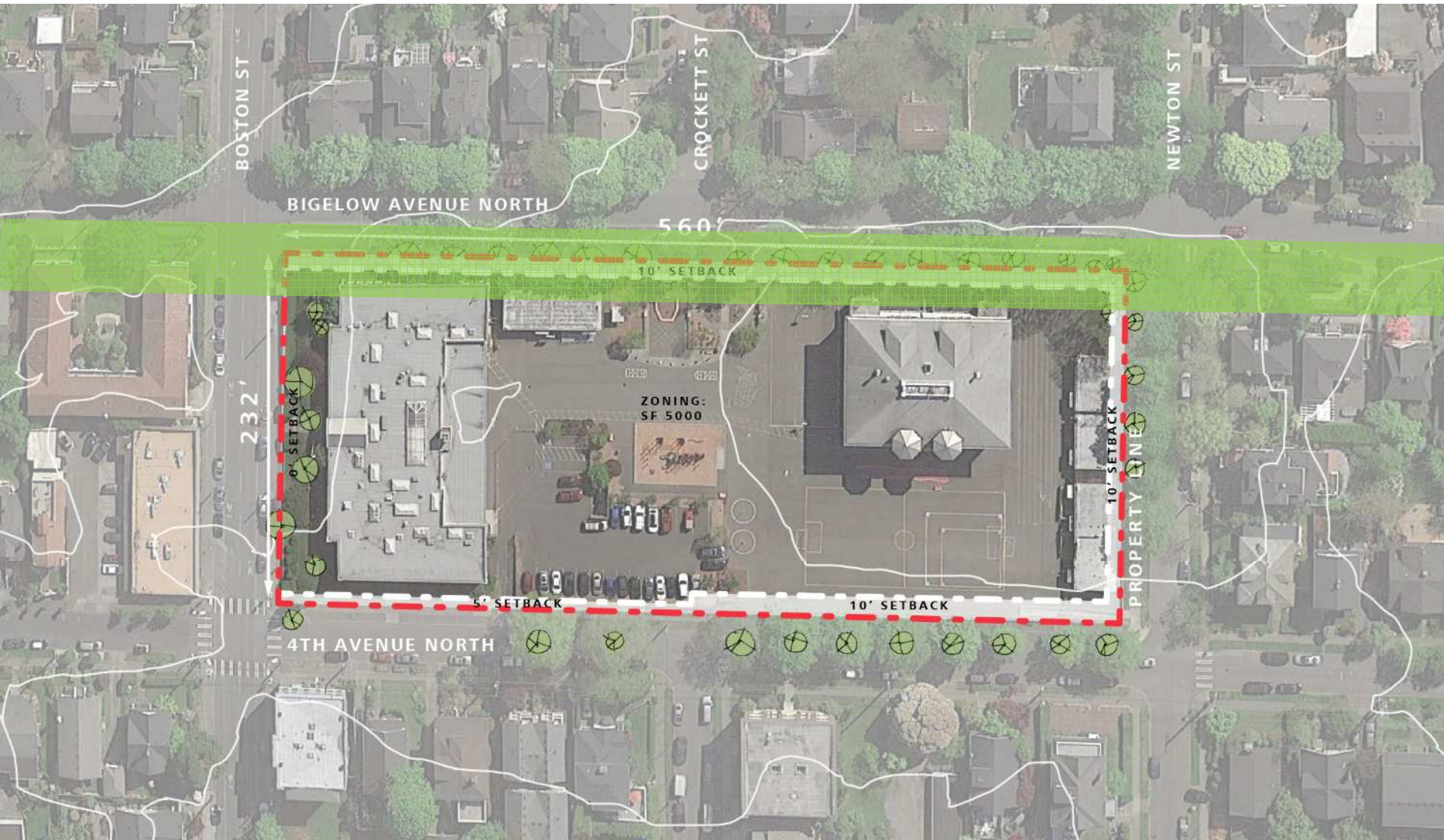
Tree Coverage



Solar and Wind Analysis



Setbacks

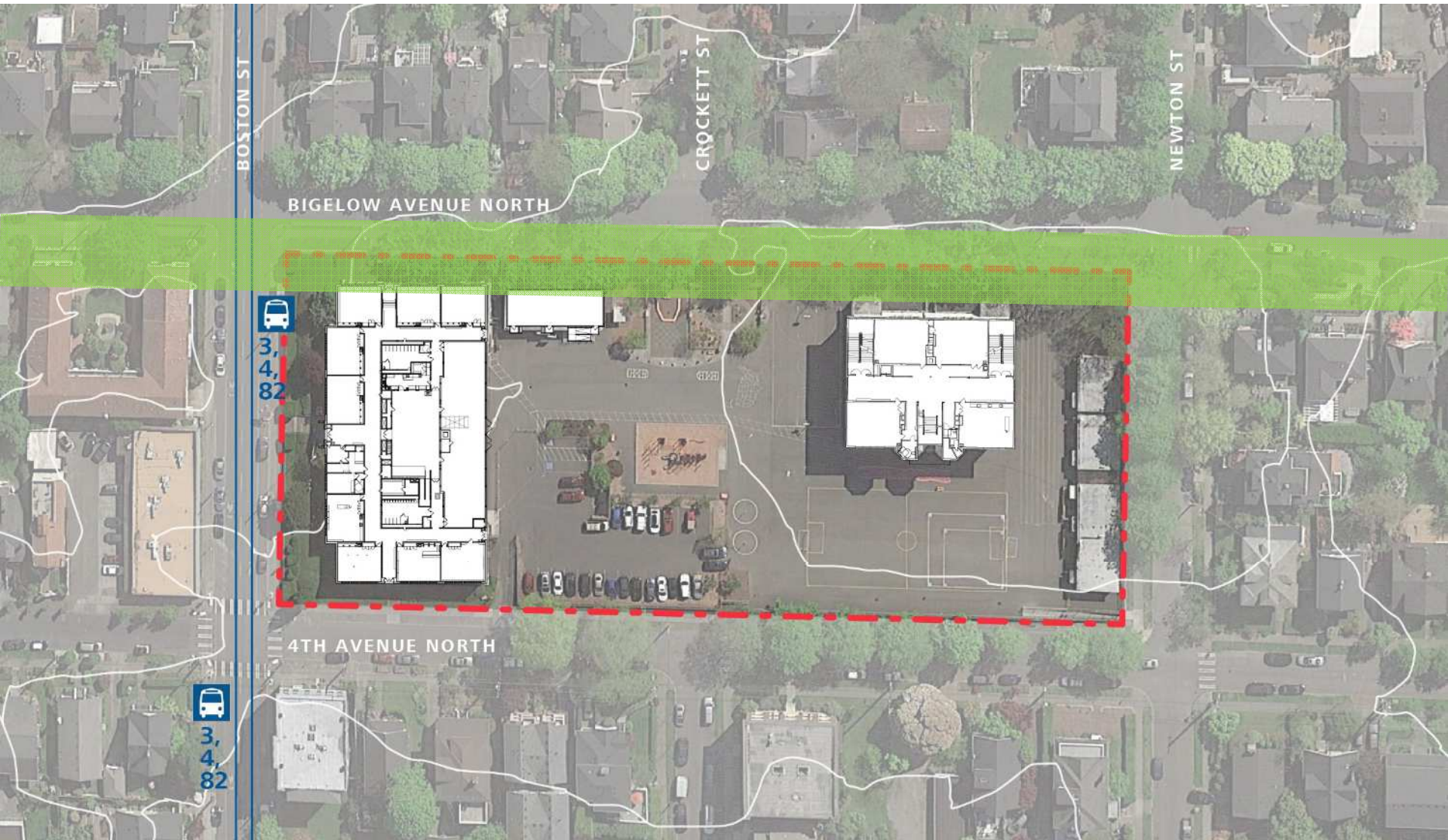


View Corridors

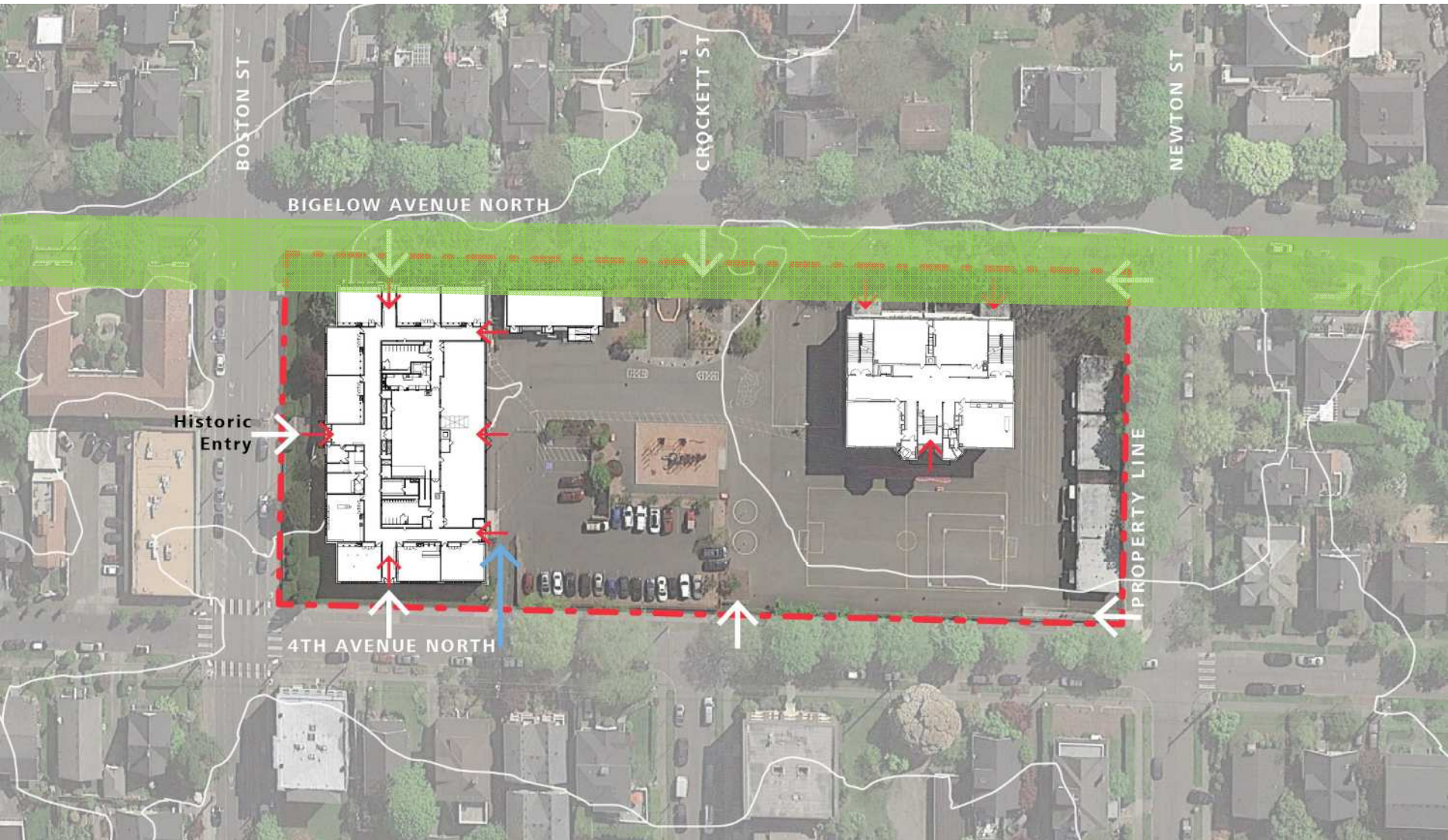


Historic Entrance Views

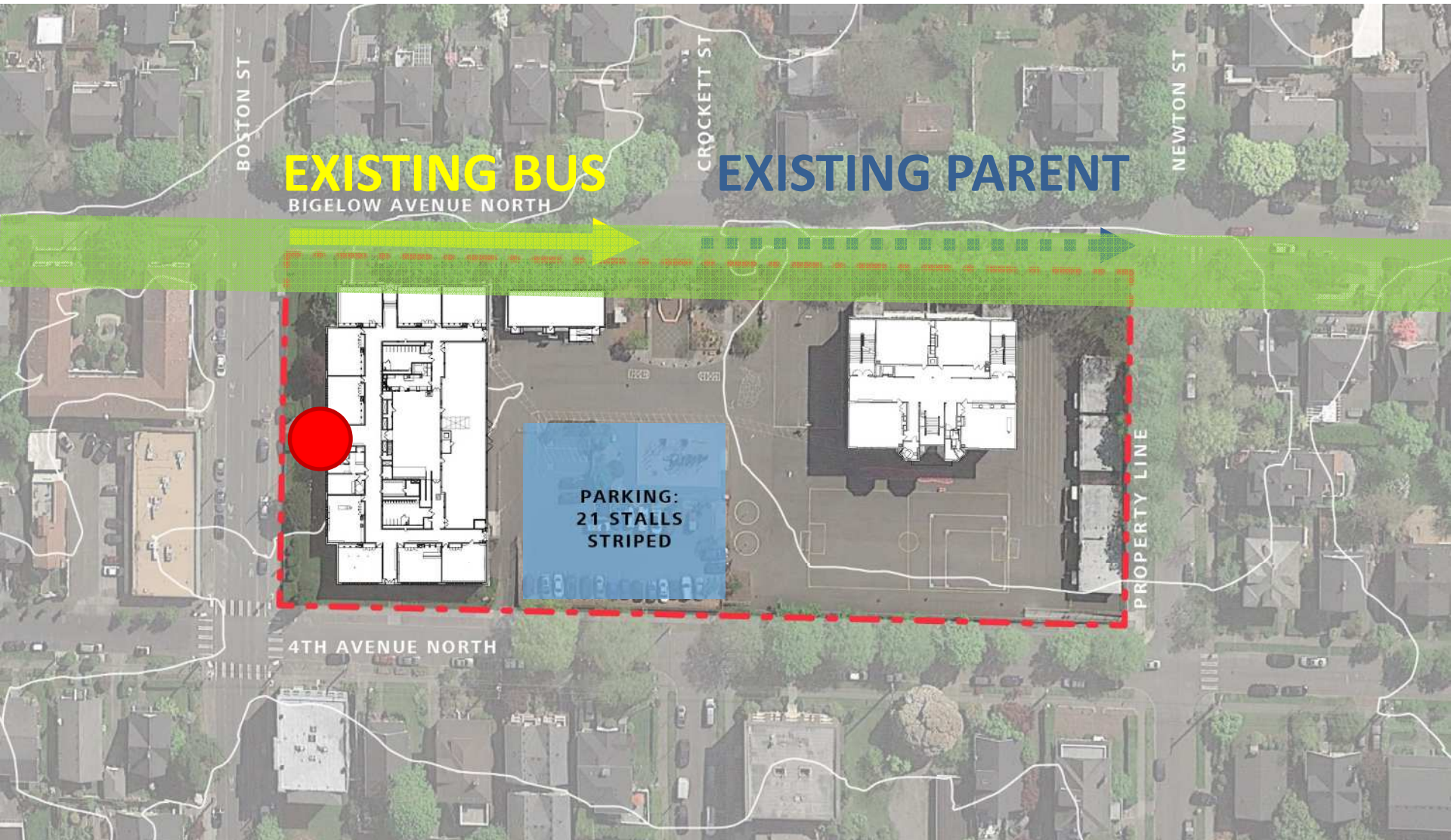
City Bus Stops



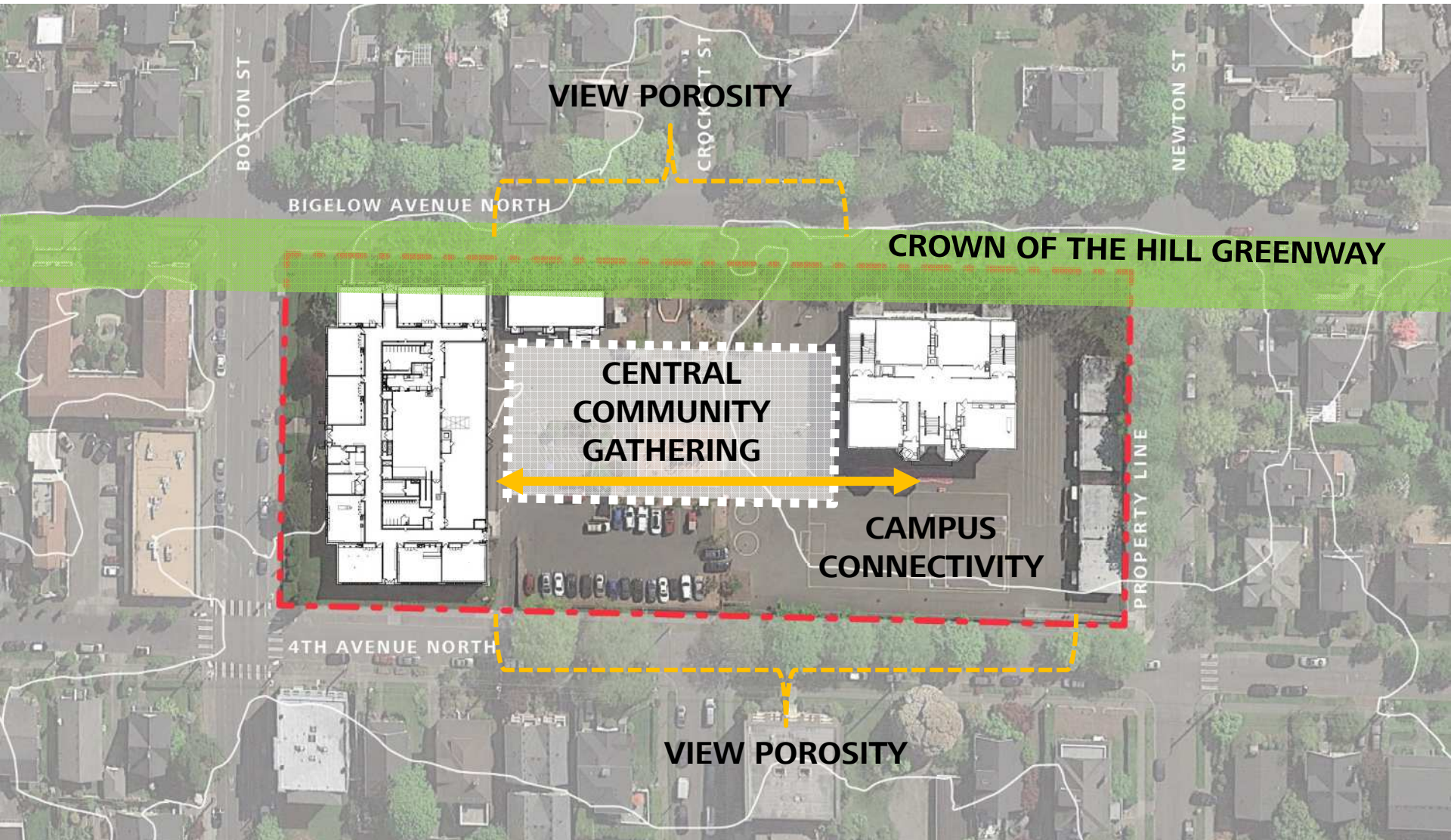
Pedestrian Site Access



Vehicular Site Access



Site Values





Traffic & Parking Analysis

Roadway Network

Traffic Volumes

Traffic Operations

Parking Demand and Supply

Traffic Safety, Transit and Non-Motorized Facilities

Short-term Impacts from Construction

Recommendations

Conceptual Design



What is a Site Specific Ed Spec?

Definition

The site specific programming process will test and adapt the Generic Educational Specification to the specific goals, needs and requirements of a particular elementary school.



Project Overview

Build an addition with 200 seats (8 classrooms) of permanent capacity and a gymnasium to address current and projected elementary growth in Queen Anne and downtown Seattle, and reduce overcrowding at elementary schools in the area.

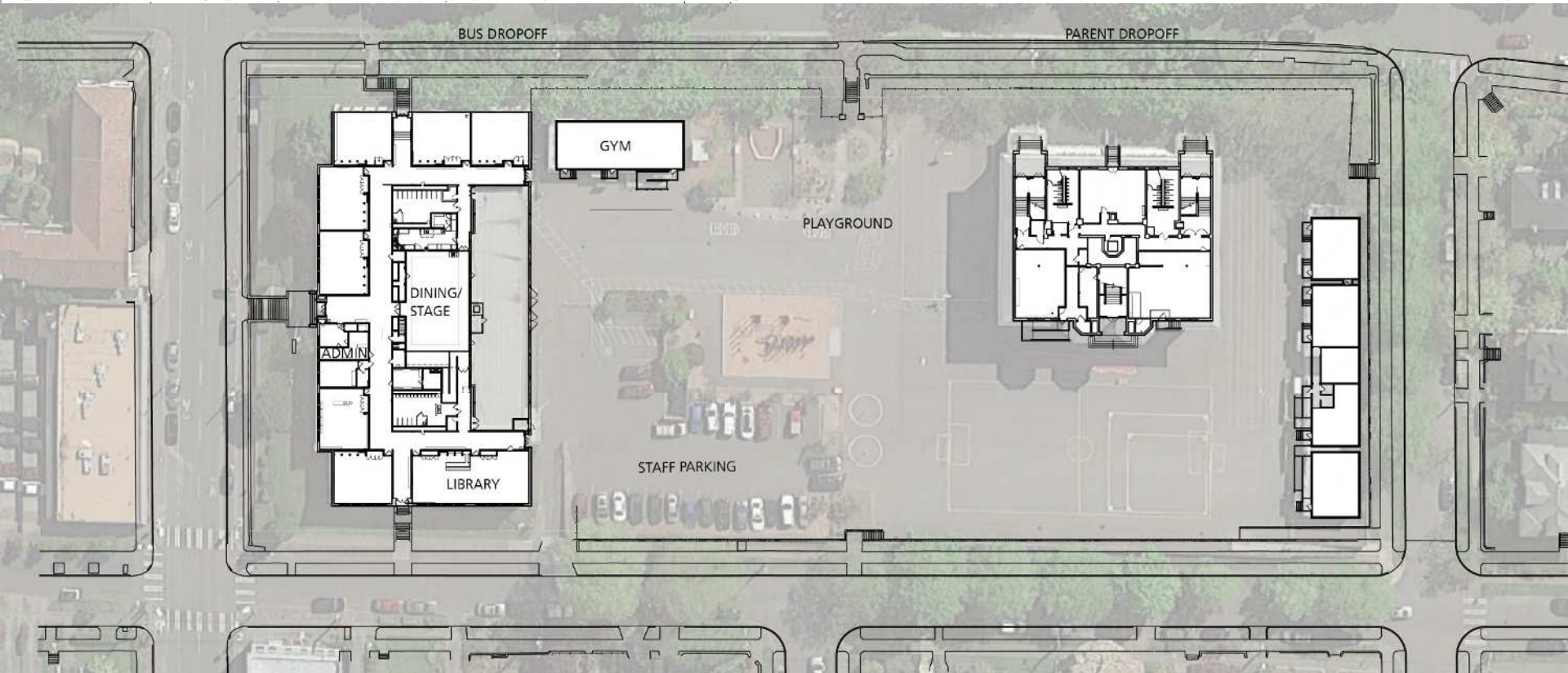
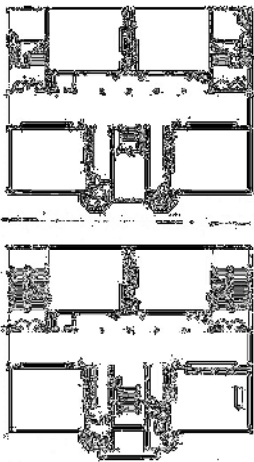
Total capacity of school is planned for 500 students.



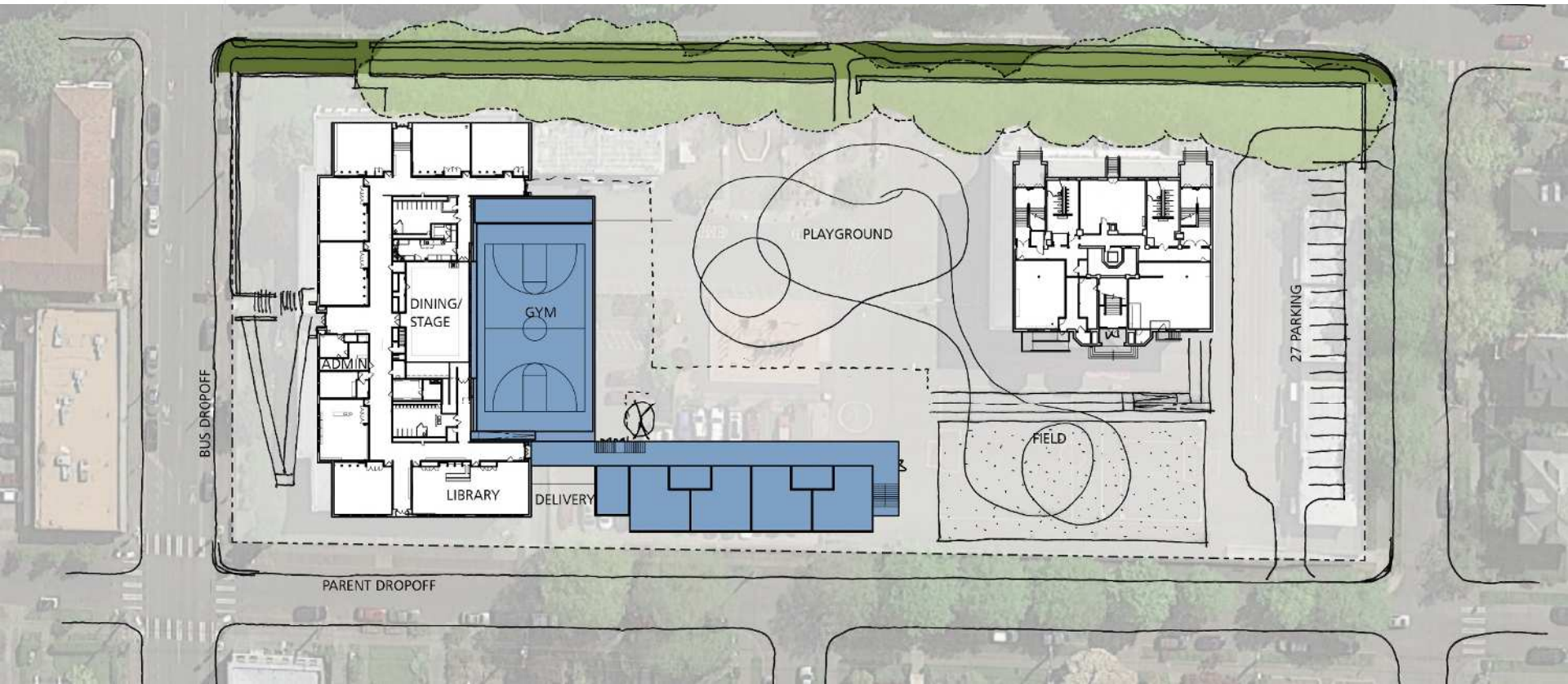
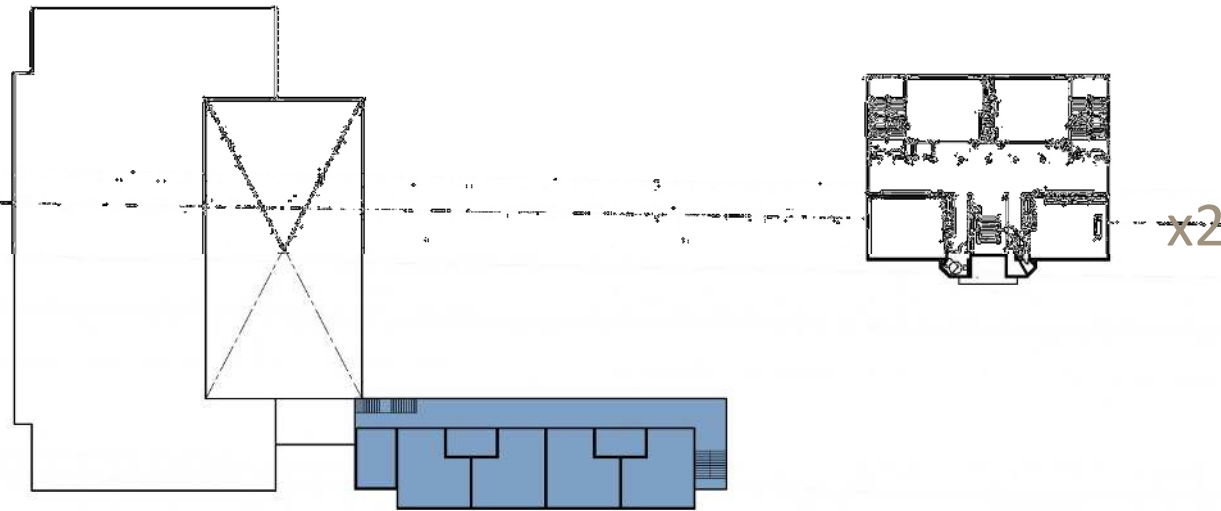
Project Mission Statement

Come see the future of Queen Anne Elementary School! Our newly designed space will “wow” you with creative opportunities to encourage children’s love of learning! At QAE, students learn everywhere and this new space will help them to finesse their skills in social/emotional development, digital citizenry and project-based learning. At the heart of our redesigned campus, student exploration will be encouraged so that we maximize our students’ potentials as 21st Century learners. From the soft outdoor play spaces to the hands-on adaptable classrooms, all students will feel as though they belong here in this unique learning space.

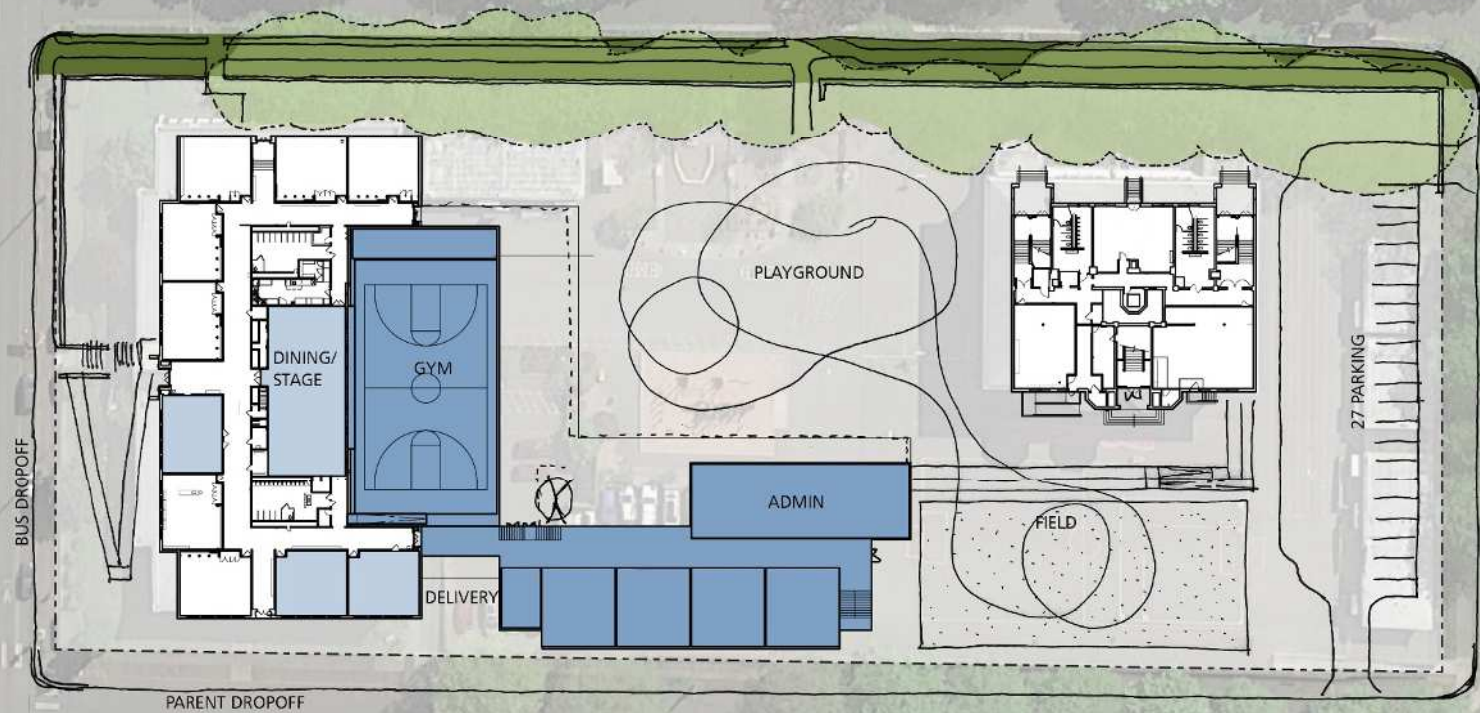
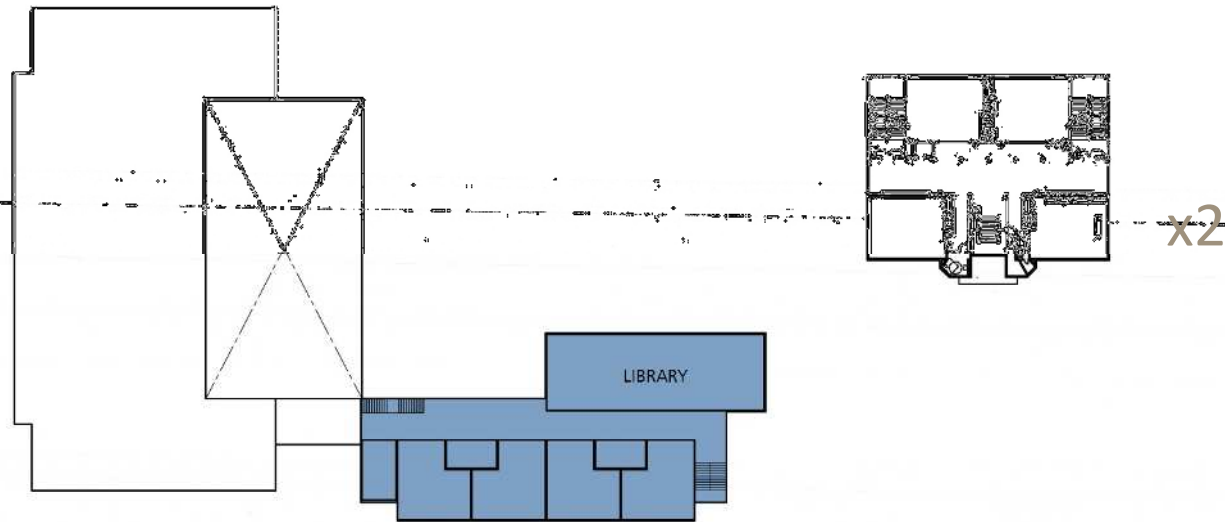
Existing



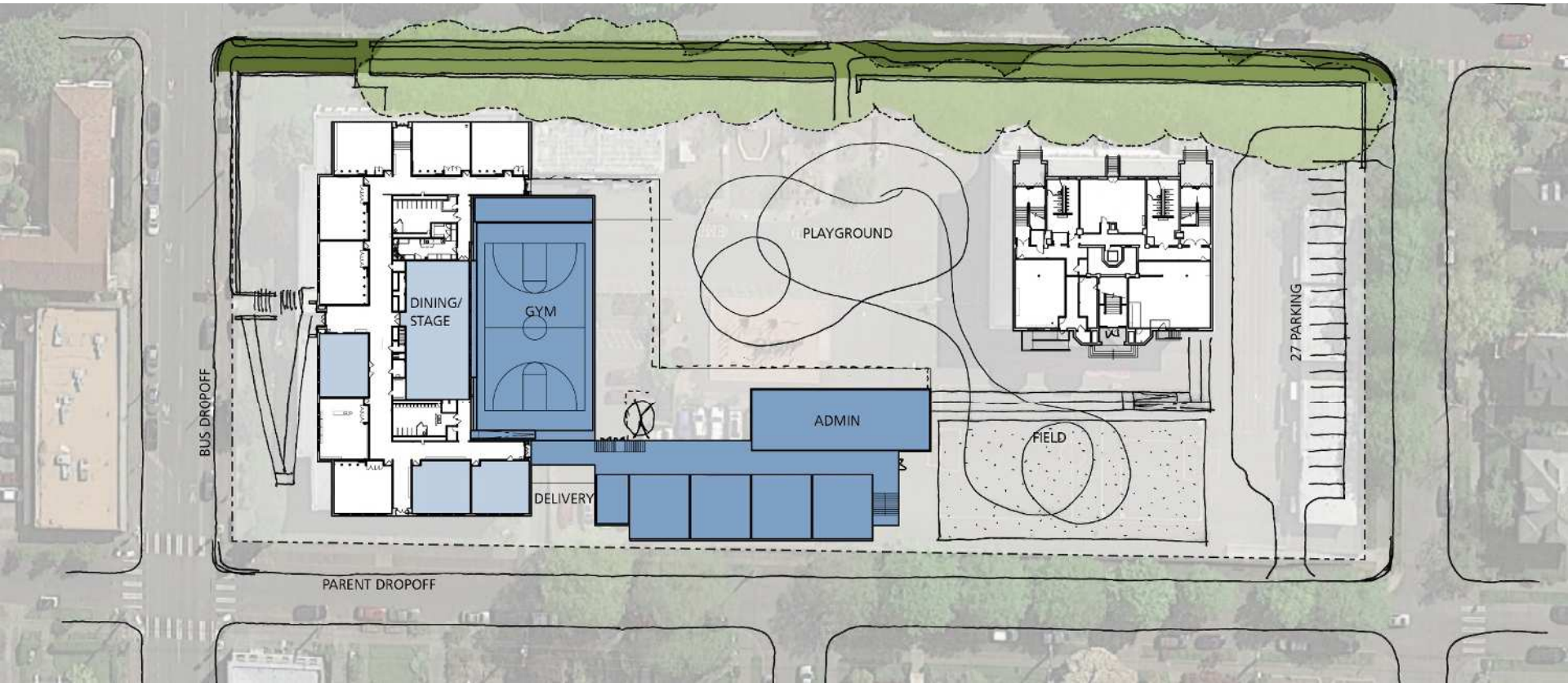
Scheme A



Scheme B



Section



Comments / Questions & Answers
(at microphone)

Comments / Questions & Answers
(one-on-one):
Listening Stations

Contact + Information

Project Manager:

Vince Gonzales

vrgonzales@seattleschools.org

(206) 252-0151

For more information:

<http://bex.seattleschools.org/bex-iv/queen-anne/>

mahlum



Queen Anne Elementary

COMMUNITY MEETING 06 June 2016

